

QAQC assay batch report

Report generated on 10-Sep-2025

Batch Information

Laboratory: ALS_BRI - Despatch #: EDGI_28A - Labjob #: BU25248993 - Return date: 9-Sep-2025

Standards Statistics

Standard	Assay Field	# of Analyses above Threshold	# of Analyses below Threshold	# of Analyses outside Warning	# of Analyses outside Error
AMIS0020	Sn_ME_XRF15b_pct	4	0	0	0
AMIS0448	Au_Au_ICP21_ppm	1	0	0	0
BEG-24	Au_Au_ICP21_ppm	3	0	0	0
EMOG-17	As_ME_MS61r_ppm	3	0	0	0
EMOG-17	Cu_ME_MS61r_ppm	3	0	0	0
EMOG-17	Nb_ME_MS61r_ppm	3	0	0	0
EMOG-17	Sc_ME_MS61r_ppm	3	0	0	0
EMOG-17	Ti_ME_MS61r_pct	3	0	0	0
GBM321-8	As_ME_MS61r_ppm	2	0	0	0
GBM321-8	Cu_ME_MS61r_ppm	2	0	0	0
GBM321-8	Nb_ME_MS61r_ppm	2	0	0	0
GBM321-8	Sc_ME_MS61r_ppm	2	0	0	0
GBM321-8	Ti_ME_MS61r_pct	2	0	0	0
GPP-14	Au_Au_ICP21_ppm	3	0	0	0
ISA-24	Au_Au_ICP21_ppm	1	0	0	0
MRCA-21	As_ME_MS61r_ppm	2	0	0	0
MRCA-21	Cu_ME_MS61r_ppm	2	0	0	0
MRCA-21	Nb_ME_MS61r_ppm	2	0	0	0
MRCA-21	Sc_ME_MS61r_ppm	2	0	0	0
MRCA-21	Ti_ME_MS61r_pct	2	0	0	0
NCSDC35012	Sn_ME_XRF15b_pct	4	0	0	0
OREAS 130	As_ME_MS61r_ppm	2	0	0	0
OREAS 130	Cu_ME_MS61r_ppm	2	0	0	0
OREAS 130	Nb_ME_MS61r_ppm	2	0	0	0
OREAS 130	Sc_ME_MS61r_ppm	2	0	0	0
OREAS 130	Ti_ME_MS61r_pct	2	0	0	0
OREAS 243	As_ME_MS61r_ppm	3	0	0	0
OREAS 243	Cu_ME_MS61r_ppm	3	0	0	0
OREAS 243	Nb_ME_MS61r_ppm	3	0	0	0
OREAS 243	Sc_ME_MS61r_ppm	3	0	0	0
OREAS 243	Ti_ME_MS61r_pct	3	0	0	0
STD.OR-230	As_ME_MS61r_ppm	1	0	0	0
STD.OR-230	Au_Au_ICP21_ppm	1	0	0	0
STD.OR-230	Cu_ME_MS61r_ppm	1	0	0	0
STD.OR-230	Nb_ME_MS61r_ppm	1	0	0	0
STD.OR-230	Sc_ME_MS61r_ppm	1	0	0	0
STD.OR-230	Ti_ME_MS61r_pct	1	0	0	0
STD.OR-235b	As_ME_MS61r_ppm	1	0	0	0
STD.OR-235b	Au_Au_ICP21_ppm	1	0	0	0
STD.OR-235b	Cu_ME_MS61r_ppm	1	0	0	0
STD.OR-235b	Nb_ME_MS61r_ppm	1	0	0	0
STD.OR-235b	Sc_ME_MS61r_ppm	1	0	0	0

Standards Statistics

Standard	Assay Field	# of Analyses above Threshold	# of Analyses below Threshold	# of Analyses outside Warning	# of Analyses outside Error
STD.OR-235b	Ti_ME_MS61r_pct	1	0	0	0
STD.OR-24d	As_ME_MS61r_ppm	3	0	0	0
STD.OR-24d	Au_Au_ICP21_ppm	1	0	0	0
STD.OR-24d	Cu_ME_MS61r_ppm	3	0	0	0
STD.OR-24d	Nb_ME_MS61r_ppm	3	0	0	0
STD.OR-24d	Sc_ME_MS61r_ppm	3	0	0	0
STD.OR-24d	Ti_ME_MS61r_pct	3	0	0	0
STD.REN05	Sn_ME_XRF15b_pct	3	0	0	0
STD.REN06	Sn_ME_XRF15b_pct	2	0	0	0
STD.REN08	Sn_ME_XRF15b_pct	1	0	0	0

Blanks Statistics

Standard	Assay Field	# of Analyses above Threshold	# of Analyses below Threshold	# of Analyses outside Warning	# of Analyses outside Error
REN_Blank	As_ME_MS61r_ppm	6	0	0	0
REN_Blank	Au_Au_ICP21_ppm	4	0	0	0
REN_Blank	Cu_ME_MS61r_ppm	6	0	0	0
REN_Blank	Nb_ME_MS61r_ppm	6	0	0	0
REN_Blank	Sc_ME_MS61r_ppm	6	0	0	0
REN_Blank	Sn_ME_XRF15b_pct	6	0	0	0
REN_Blank	Ti_ME_MS61r_pct	6	0	0	0

Duplicates/Repeats Statistics

CheckStage	Assay Field	# of Analyses above Threshold	# of Analyses below Threshold	# of Analyses outside Warning	# of Analyses outside Error
I : Instrument/Measurement Stage	As_ME_MS61r_ppm	5	0	2	0
I : Instrument/Measurement Stage	Au_Au_ICP21_ppm	2	3	0	0
I : Instrument/Measurement Stage	Cu_ME_MS61r_ppm	5	0	3	0
I : Instrument/Measurement Stage	Nb_ME_MS61r_ppm	5	0	2	1
I : Instrument/Measurement Stage	Sc_ME_MS61r_ppm	5	0	2	0
I : Instrument/Measurement Stage	Sn_ME_XRF15b_pct	1	7	0	0
I : Instrument/Measurement Stage	Ti_ME_MS61r_pct	5	0	1	1

Standards Analyses

StandardID	Assay Name	Sample ID	Duplicate Number	Assay Value	Expected Value	% Diff	QAQC Status	Import Status
AMIS0020	Sn_ME_XRF15b_pct	St05:AMIS0020_25248993	LAB_STD	0.654				Pending
AMIS0020	Sn_ME_XRF15b_pct	St08:AMIS0020_25248993	LAB_STD	0.664				Pending
AMIS0020	Sn_ME_XRF15b_pct	St10:AMIS0020_25248993	LAB_STD	0.655				Pending
AMIS0020	Sn_ME_XRF15b_pct	St17:AMIS0020_25248993	LAB_STD	0.651				Pending
AMIS0448	Au_Au_ICP21_ppm	St28:AMIS0448_25248993	LAB_STD	1.34				Pending
BEG-24	Au_Au_ICP21_ppm	St04:BEG-24_25248993	LAB_STD	2.54				Pending
BEG-24	Au_Au_ICP21_ppm	St07:BEG-24_25248993	LAB_STD	2.51				Pending
BEG-24	Au_Au_ICP21_ppm	St12:BEG-24_25248993	LAB_STD	2.56				Pending
EMOG-17	As_ME_MS61r_ppm	St14:EMOG-17_25248993	LAB_STD	597				Pending
EMOG-17	As_ME_MS61r_ppm	St18:EMOG-17_25248993	LAB_STD	572				Pending
EMOG-17	As_ME_MS61r_ppm	St19:EMOG-17_25248993	LAB_STD	549				Pending
EMOG-17	Cu_ME_MS61r_ppm	St14:EMOG-17_25248993	LAB_STD	8410				Pending
EMOG-17	Cu_ME_MS61r_ppm	St18:EMOG-17_25248993	LAB_STD	8120				Pending
EMOG-17	Cu_ME_MS61r_ppm	St19:EMOG-17_25248993	LAB_STD	8100				Pending
EMOG-17	Nb_ME_MS61r_ppm	St14:EMOG-17_25248993	LAB_STD	14.7				Pending
EMOG-17	Nb_ME_MS61r_ppm	St18:EMOG-17_25248993	LAB_STD	13.7				Pending
EMOG-17	Nb_ME_MS61r_ppm	St19:EMOG-17_25248993	LAB_STD	14.8				Pending
EMOG-17	Sc_ME_MS61r_ppm	St14:EMOG-17_25248993	LAB_STD	7.2				Pending
EMOG-17	Sc_ME_MS61r_ppm	St18:EMOG-17_25248993	LAB_STD	7.9				Pending
EMOG-17	Sc_ME_MS61r_ppm	St19:EMOG-17_25248993	LAB_STD	7.7				Pending
EMOG-17	Ti_ME_MS61r_pct	St14:EMOG-17_25248993	LAB_STD	0.325				Pending
EMOG-17	Ti_ME_MS61r_pct	St18:EMOG-17_25248993	LAB_STD	0.312				Pending
EMOG-17	Ti_ME_MS61r_pct	St19:EMOG-17_25248993	LAB_STD	0.308				Pending
GBM321-8	As_ME_MS61r_ppm	St01:GBM321-8_25248993	LAB_STD	60.2				Pending
GBM321-8	As_ME_MS61r_ppm	St02:GBM321-8_25248993	LAB_STD	52.3				Pending
GBM321-8	Cu_ME_MS61r_ppm	St01:GBM321-8_25248993	LAB_STD	3700				Pending
GBM321-8	Cu_ME_MS61r_ppm	St02:GBM321-8_25248993	LAB_STD	3700				Pending
GBM321-8	Nb_ME_MS61r_ppm	St01:GBM321-8_25248993	LAB_STD	10.5				Pending
GBM321-8	Nb_ME_MS61r_ppm	St02:GBM321-8_25248993	LAB_STD	11				Pending
GBM321-8	Sc_ME_MS61r_ppm	St01:GBM321-8_25248993	LAB_STD	18				Pending
GBM321-8	Sc_ME_MS61r_ppm	St02:GBM321-8_25248993	LAB_STD	17.1				Pending
GBM321-8	Ti_ME_MS61r_pct	St01:GBM321-8_25248993	LAB_STD	0.667				Pending
GBM321-8	Ti_ME_MS61r_pct	St02:GBM321-8_25248993	LAB_STD	0.677				Pending
GPP-14	Au_Au_ICP21_ppm	St22:GPP-14_25248993	LAB_STD	0.915				Pending
GPP-14	Au_Au_ICP21_ppm	St26:GPP-14_25248993	LAB_STD	0.93				Pending
GPP-14	Au_Au_ICP21_ppm	St27:GPP-14_25248993	LAB_STD	0.92				Pending
ISA-24	Au_Au_ICP21_ppm	St03:ISA-24_25248993	LAB_STD	0.317				Pending
MRCA-21	As_ME_MS61r_ppm	St06:MRCA-21_25248993	LAB_STD	18.6				Pending
MRCA-21	As_ME_MS61r_ppm	St13:MRCA-21_25248993	LAB_STD	18.8				Pending
MRCA-21	Cu_ME_MS61r_ppm	St06:MRCA-21_25248993	LAB_STD	951				Pending
MRCA-21	Cu_ME_MS61r_ppm	St13:MRCA-21_25248993	LAB_STD	963				Pending
MRCA-21	Nb_ME_MS61r_ppm	St06:MRCA-21_25248993	LAB_STD	14.8				Pending
MRCA-21	Nb_ME_MS61r_ppm	St13:MRCA-21_25248993	LAB_STD	14.2				Pending
MRCA-21	Sc_ME_MS61r_ppm	St06:MRCA-21_25248993	LAB_STD	8.2				Pending
MRCA-21	Sc_ME_MS61r_ppm	St13:MRCA-21_25248993	LAB_STD	8.6				Pending
MRCA-21	Ti_ME_MS61r_pct	St06:MRCA-21_25248993	LAB_STD	0.367				Pending
MRCA-21	Ti_ME_MS61r_pct	St13:MRCA-21_25248993	LAB_STD	0.361				Pending
NCSDC35012	Sn_ME_XRF15b_pct	St16:NCSDC35012_25248993	LAB_STD	4.06				Pending
NCSDC35012	Sn_ME_XRF15b_pct	St23:NCSDC35012_25248993	LAB_STD	3.97				Pending
NCSDC35012	Sn_ME_XRF15b_pct	St24:NCSDC35012_25248993	LAB_STD	4				Pending
NCSDC35012	Sn_ME_XRF15b_pct	St25:NCSDC35012_25248993	LAB_STD	3.95				Pending
OREAS 130	As_ME_MS61r_ppm	St20:OREAS 130_25248993	LAB_STD	204				Pending
OREAS 130	As_ME_MS61r_ppm	St21:OREAS 130_25248993	LAB_STD	206				Pending
OREAS 130	Cu_ME_MS61r_ppm	St20:OREAS 130_25248993	LAB_STD	223				Pending
OREAS 130	Cu_ME_MS61r_ppm	St21:OREAS 130_25248993	LAB_STD	232				Pending
OREAS 130	Nb_ME_MS61r_ppm	St20:OREAS 130_25248993	LAB_STD	6.6				Pending
OREAS 130	Nb_ME_MS61r_ppm	St21:OREAS 130_25248993	LAB_STD	6.2				Pending
OREAS 130	Sc_ME_MS61r_ppm	St20:OREAS 130_25248993	LAB_STD	8.2				Pending
OREAS 130	Sc_ME_MS61r_ppm	St21:OREAS 130_25248993	LAB_STD	7.9				Pending
OREAS 130	Ti_ME_MS61r_pct	St20:OREAS 130_25248993	LAB_STD	0.187				Pending
OREAS 130	Ti_ME_MS61r_pct	St21:OREAS 130_25248993	LAB_STD	0.186				Pending
OREAS 243	As_ME_MS61r_ppm	St09:OREAS 243_25248993	LAB_STD	86.1				Pending
OREAS 243	As_ME_MS61r_ppm	St11:OREAS 243_25248993	LAB_STD	86.1				Pending
OREAS 243	As_ME_MS61r_ppm	St15:OREAS 243_25248993	LAB_STD	82.5				Pending
OREAS 243	Cu_ME_MS61r_ppm	St09:OREAS 243_25248993	LAB_STD	186				Pending
OREAS 243	Cu_ME_MS61r_ppm	St11:OREAS 243_25248993	LAB_STD	178				Pending
OREAS 243	Cu_ME_MS61r_ppm	St15:OREAS 243_25248993	LAB_STD	172				Pending
OREAS 243	Nb_ME_MS61r_ppm	St09:OREAS 243_25248993	LAB_STD	3.6				Pending
OREAS 243	Nb_ME_MS61r_ppm	St11:OREAS 243_25248993	LAB_STD	3.6				Pending
OREAS 243	Nb_ME_MS61r_ppm	St15:OREAS 243_25248993	LAB_STD	3.5				Pending
OREAS 243	Sc_ME_MS61r_ppm	St09:OREAS 243_25248993	LAB_STD	37				Pending
OREAS 243	Sc_ME_MS61r_ppm	St11:OREAS 243_25248993	LAB_STD	34.6				Pending
OREAS 243	Sc_ME_MS61r_ppm	St15:OREAS 243_25248993	LAB_STD	36.3				Pending
OREAS 243	Ti_ME_MS61r_pct	St09:OREAS 243_25248993	LAB_STD	0.612				Pending

Standards Analyses

StandardID	Assay Name	Sample ID	Duplicate Number	Assay Value	Expected Value	% Diff	QAQC Status	Import Status
OREAS 243	Ti_ME_MS61r_pct	St11:OREAS 243_25248993	LAB_STD	0.602				Pending
OREAS 243	Ti_ME_MS61r_pct	St15:OREAS 243_25248993	LAB_STD	0.585				Pending
STD.OR-230	As_ME_MS61r_ppm	RDD307510	STD	16	17.3	-7.51%		Pending
STD.OR-230	Au_Au_ICP21_ppm	RDD307510	STD	0.331	0.337	-1.78%		Pending
STD.OR-230	Cu_ME_MS61r_ppm	RDD307510	STD	171	169	1.18%		Pending
STD.OR-230	Nb_ME_MS61r_ppm	RDD307510	STD	3.1	3.39	-8.55%		Pending
STD.OR-230	Sc_ME_MS61r_ppm	RDD307510	STD	41.6	43.7	-4.81%		Pending
STD.OR-230	Ti_ME_MS61r_pct	RDD307510	STD	0.607	0.639	-5.01%		Pending
STD.OR-235b	As_ME_MS61r_ppm	RDD307585	STD	354	353	0.28%		Pending
STD.OR-235b	Au_Au_ICP21_ppm	RDD307585	STD	1.57	1.63	-3.68%		Pending
STD.OR-235b	Cu_ME_MS61r_ppm	RDD307585	STD	28.4	29.3	-3.07%		Pending
STD.OR-235b	Nb_ME_MS61r_ppm	RDD307585	STD	15.7	15.8	-0.63%		Pending
STD.OR-235b	Sc_ME_MS61r_ppm	RDD307585	STD	15.8	14.7	7.48%		Pending
STD.OR-235b	Ti_ME_MS61r_pct	RDD307585	STD	0.491	0.489	0.41%		Pending
STD.OR-24d	As_ME_MS61r_ppm	RDD307535	STD	1.3	1.35	-3.70%		Pending
STD.OR-24d	As_ME_MS61r_ppm	RDD307560	STD	1.2	1.35	-11.11%		Pending
STD.OR-24d	As_ME_MS61r_ppm	RDD307610	STD	1.1	1.35	-18.52%		Pending
STD.OR-24d	Au_Au_ICP21_ppm	RDD307535	STD	0.001	0.001	0.00%		Pending
STD.OR-24d	Cu_ME_MS61r_ppm	RDD307535	STD	45.4	43.2	5.09%		Pending
STD.OR-24d	Cu_ME_MS61r_ppm	RDD307560	STD	41.9	43.2	-3.01%		Pending
STD.OR-24d	Cu_ME_MS61r_ppm	RDD307610	STD	42.8	43.2	-0.93%		Pending
STD.OR-24d	Nb_ME_MS61r_ppm	RDD307535	STD	44.5	44.6	-0.22%		Pending
STD.OR-24d	Nb_ME_MS61r_ppm	RDD307560	STD	43	44.6	-3.59%		Pending
STD.OR-24d	Nb_ME_MS61r_ppm	RDD307610	STD	40.7	44.6	-8.74%		Pending
STD.OR-24d	Sc_ME_MS61r_ppm	RDD307535	STD	20.5	20	2.50%		Pending
STD.OR-24d	Sc_ME_MS61r_ppm	RDD307560	STD	21.5	20	7.50%		Pending
STD.OR-24d	Sc_ME_MS61r_ppm	RDD307610	STD	18.3	20	-8.50%		Pending
STD.OR-24d	Ti_ME_MS61r_pct	RDD307535	STD	1.215	1.22	-0.41%		Pending
STD.OR-24d	Ti_ME_MS61r_pct	RDD307560	STD	1.2	1.22	-1.64%		Pending
STD.OR-24d	Ti_ME_MS61r_pct	RDD307610	STD	1.17	1.22	-4.10%		Pending
STD.REN05	Sn_ME_XRF15b_pct	RDD307509	STD	2.65	2.68	-1.12%		Pending
STD.REN05	Sn_ME_XRF15b_pct	RDD307559	STD	2.68	2.68	0.00%		Pending
STD.REN05	Sn_ME_XRF15b_pct	RDD307634	STD	2.69	2.68	0.37%		Pending
STD.REN06	Sn_ME_XRF15b_pct	RDD307534	STD	2.49	2.54	-1.97%		Pending
STD.REN06	Sn_ME_XRF15b_pct	RDD307609	STD	2.53	2.54	-0.39%		Pending
STD.REN08	Sn_ME_XRF15b_pct	RDD307584	STD	1.12	1.12	0.00%		Pending

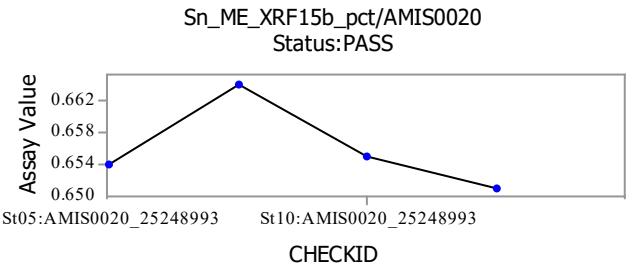
Blanks Analyses

StandardID	Assay Name	Sample ID	Duplicate Number	Assay Value	Expected Value	% Diff	QAQC Status	Import Status
REN_Blank	As_ME_MS61r_ppm	RDD307501	BLK	0.6				Pending
REN_Blank	As_ME_MS61r_ppm	RDD307524	BLK	1.7				Pending
REN_Blank	As_ME_MS61r_ppm	RDD307544	BLK	0.6				Pending
REN_Blank	As_ME_MS61r_ppm	RDD307564	BLK	1.4				Pending
REN_Blank	As_ME_MS61r_ppm	RDD307587	BLK	2.3				Pending
REN_Blank	As_ME_MS61r_ppm	RDD307630	BLK	1.9				Pending
REN_Blank	Au_Au_ICP21_ppm	RDD307501	BLK	0.002				Pending
REN_Blank	Au_Au_ICP21_ppm	RDD307524	BLK	0.002				Pending
REN_Blank	Au_Au_ICP21_ppm	RDD307544	BLK	0.007				Pending
REN_Blank	Au_Au_ICP21_ppm	RDD307630	BLK	0.001				Pending
REN_Blank	Cu_ME_MS61r_ppm	RDD307501	BLK	2.3				Pending
REN_Blank	Cu_ME_MS61r_ppm	RDD307524	BLK	5.1				Pending
REN_Blank	Cu_ME_MS61r_ppm	RDD307544	BLK	2.6				Pending
REN_Blank	Cu_ME_MS61r_ppm	RDD307564	BLK	3.3				Pending
REN_Blank	Cu_ME_MS61r_ppm	RDD307587	BLK	3.7				Pending
REN_Blank	Cu_ME_MS61r_ppm	RDD307630	BLK	3.5				Pending
REN_Blank	Nb_ME_MS61r_ppm	RDD307501	BLK	1.2				Pending
REN_Blank	Nb_ME_MS61r_ppm	RDD307524	BLK	1.3				Pending
REN_Blank	Nb_ME_MS61r_ppm	RDD307544	BLK	1.1				Pending
REN_Blank	Nb_ME_MS61r_ppm	RDD307564	BLK	1.3				Pending
REN_Blank	Nb_ME_MS61r_ppm	RDD307587	BLK	1.4				Pending
REN_Blank	Nb_ME_MS61r_ppm	RDD307630	BLK	1.4				Pending
REN_Blank	Sc_ME_MS61r_ppm	RDD307501	BLK	0.2				Pending
REN_Blank	Sc_ME_MS61r_ppm	RDD307524	BLK	0.2				Pending
REN_Blank	Sc_ME_MS61r_ppm	RDD307544	BLK	0.2				Pending
REN_Blank	Sc_ME_MS61r_ppm	RDD307564	BLK	0.2				Pending
REN_Blank	Sc_ME_MS61r_ppm	RDD307587	BLK	0.2				Pending
REN_Blank	Sc_ME_MS61r_ppm	RDD307630	BLK	0.4				Pending
REN_Blank	Sn_ME_XRF15b_pct	RDD307501	BLK	0.0025	0	Error!		Pending
REN_Blank	Sn_ME_XRF15b_pct	RDD307524	BLK	0.0025	0	Error!		Pending
REN_Blank	Sn_ME_XRF15b_pct	RDD307544	BLK	0.0025	0	Error!		Pending
REN_Blank	Sn_ME_XRF15b_pct	RDD307564	BLK	0.0025	0	Error!		Pending
REN_Blank	Sn_ME_XRF15b_pct	RDD307587	BLK	0.0025	0	Error!		Pending
REN_Blank	Sn_ME_XRF15b_pct	RDD307630	BLK	0.0025	0	Error!		Pending
REN_Blank	Ti_ME_MS61r_pct	RDD307501	BLK	0.047				Pending
REN_Blank	Ti_ME_MS61r_pct	RDD307524	BLK	0.055				Pending
REN_Blank	Ti_ME_MS61r_pct	RDD307544	BLK	0.038				Pending
REN_Blank	Ti_ME_MS61r_pct	RDD307564	BLK	0.056				Pending
REN_Blank	Ti_ME_MS61r_pct	RDD307587	BLK	0.057				Pending
REN_Blank	Ti_ME_MS61r_pct	RDD307630	BLK	0.06				Pending

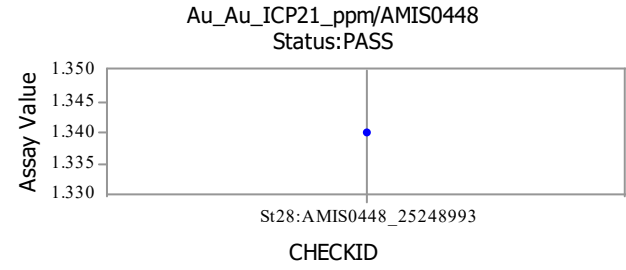
Duplicates/Repeats Analyses

Check Stage	Assay Name	Sample ID	Assay Value	Check ID	Duplicate Number	Check Value	MAPD	QAQC Status	Import Status
I	As_ME_MS61r_ppm	RDD307494	21.8	Ch:RDD307494	EDGI_28A	21.9	0.46%		Pending
I	As_ME_MS61r_ppm	RDD307531	2.9	Ch:RDD307531	EDGI_28A	3.1	6.67%	Warning	Pending
I	As_ME_MS61r_ppm	RDD307568	46.2	Ch:RDD307568	EDGI_28A	46.2			Pending
I	As_ME_MS61r_ppm	RDD307605	14.9	Ch:RDD307605	EDGI_28A	15.7	5.23%	Warning	Pending
I	As_ME_MS61r_ppm	RDD307642	26.1	Ch:RDD307642	EDGI_28A	26.7	2.27%		Pending
I	Au_Au_ICP21_ppm	RDD307486	0.007	Ch:RDD307486	EDGI_28A	0.007			Pending
I	Au_Au_ICP21_ppm	RDD307506	0.005	Ch:RDD307506	EDGI_28A	0.005			Pending
I	Au_Au_ICP21_ppm	RDD307556	0.001	Ch:RDD307556	EDGI_28A	0.003			Pending
I	Au_Au_ICP21_ppm	RDD307588	0.002	Ch:RDD307588	EDGI_28A	0.002			Pending
I	Au_Au_ICP21_ppm	RDD307617	0.001	Ch:RDD307617	EDGI_28A	0.001			Pending
I	Cu_ME_MS61r_ppm	RDD307494	26.6	Ch:RDD307494	EDGI_28A	25	6.20%	Warning	Pending
I	Cu_ME_MS61r_ppm	RDD307531	4.4	Ch:RDD307531	EDGI_28A	4.8	8.70%	Warning	Pending
I	Cu_ME_MS61r_ppm	RDD307568	47.1	Ch:RDD307568	EDGI_28A	45.5	3.46%		Pending
I	Cu_ME_MS61r_ppm	RDD307605	42.3	Ch:RDD307605	EDGI_28A	46.3	9.03%	Warning	Pending
I	Cu_ME_MS61r_ppm	RDD307642	61.5	Ch:RDD307642	EDGI_28A	60.6	1.47%		Pending
I	Nb_ME_MS61r_ppm	RDD307494	29.4	Ch:RDD307494	EDGI_28A	25.5	14.21%	Error	Pending
I	Nb_ME_MS61r_ppm	RDD307531	10.7	Ch:RDD307531	EDGI_28A	11.1	3.67%		Pending
I	Nb_ME_MS61r_ppm	RDD307568	17.2	Ch:RDD307568	EDGI_28A	18.4	6.74%	Warning	Pending
I	Nb_ME_MS61r_ppm	RDD307605	11.4	Ch:RDD307605	EDGI_28A	11.6	1.74%		Pending
I	Nb_ME_MS61r_ppm	RDD307642	12.2	Ch:RDD307642	EDGI_28A	12.2			Pending
I	Sc_ME_MS61r_ppm	RDD307494	14.6	Ch:RDD307494	EDGI_28A	14.4	1.38%		Pending
I	Sc_ME_MS61r_ppm	RDD307531	3.7	Ch:RDD307531	EDGI_28A	3.9	5.26%	Warning	Pending
I	Sc_ME_MS61r_ppm	RDD307568	15.8	Ch:RDD307568	EDGI_28A	15.8			Pending
I	Sc_ME_MS61r_ppm	RDD307605	12.6	Ch:RDD307605	EDGI_28A	13.5	6.90%	Warning	Pending
I	Sc_ME_MS61r_ppm	RDD307642	28.1	Ch:RDD307642	EDGI_28A	27	3.99%		Pending
I	Sn_ME_XRF15b_pct	RDD307494	0.01	Ch:RDD307494	EDGI_28A	0.011			Pending
I	Sn_ME_XRF15b_pct	RDD307515	0.009	Ch:RDD307515	EDGI_28A	0.007			Pending
I	Sn_ME_XRF15b_pct	RDD307539	0.007	Ch:RDD307539	EDGI_28A	0.0025			Pending
I	Sn_ME_XRF15b_pct	RDD307559	2.68	Ch:RDD307559	EDGI_28A	2.67	0.37%		Pending
I	Sn_ME_XRF15b_pct	RDD307583	0.008	Ch:RDD307583	EDGI_28A	0.008			Pending
I	Sn_ME_XRF15b_pct	RDD307604	0.006	Ch:RDD307604	EDGI_28A	0.0025			Pending
I	Sn_ME_XRF15b_pct	RDD307628	0.0025	Ch:RDD307628	EDGI_28A	0.0025			Pending
I	Sn_ME_XRF15b_pct	RDD307649	0.0025	Ch:RDD307649	EDGI_28A	0.005			Pending
I	Ti_ME_MS61r_pct	RDD307494	0.299	Ch:RDD307494	EDGI_28A	0.268	10.93%	Error	Pending
I	Ti_ME_MS61r_pct	RDD307531	0.144	Ch:RDD307531	EDGI_28A	0.144			Pending
I	Ti_ME_MS61r_pct	RDD307568	0.416	Ch:RDD307568	EDGI_28A	0.415	0.24%		Pending
I	Ti_ME_MS61r_pct	RDD307605	0.308	Ch:RDD307605	EDGI_28A	0.313	1.61%		Pending
I	Ti_ME_MS61r_pct	RDD307642	0.539	Ch:RDD307642	EDGI_28A	0.535	0.74%		Pending

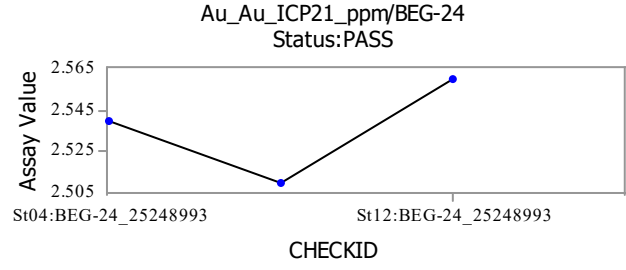
Standard: AMIS0020



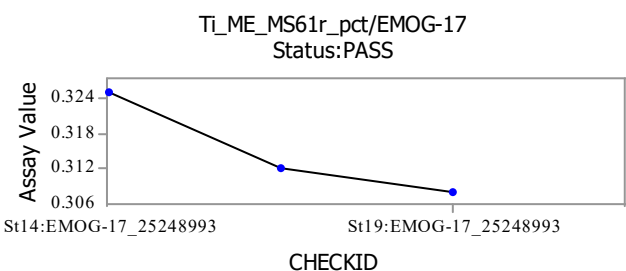
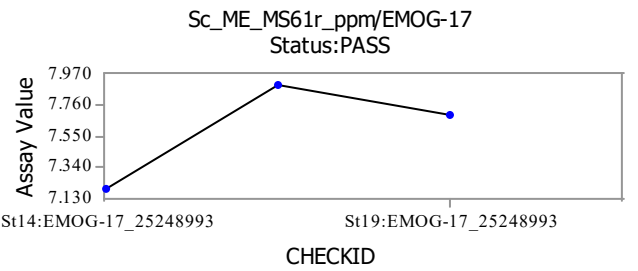
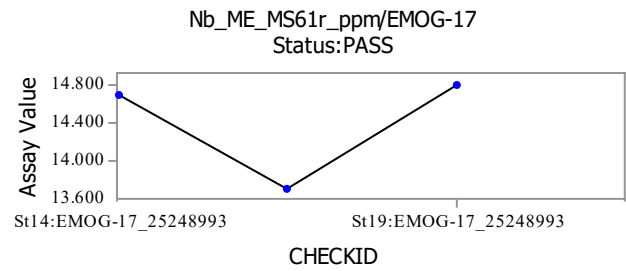
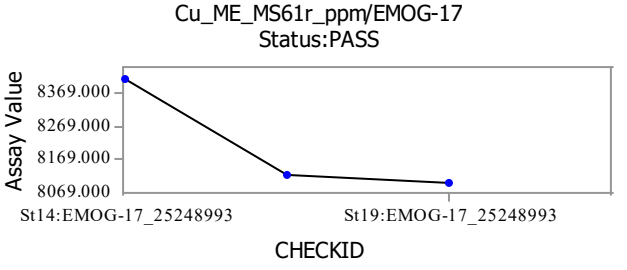
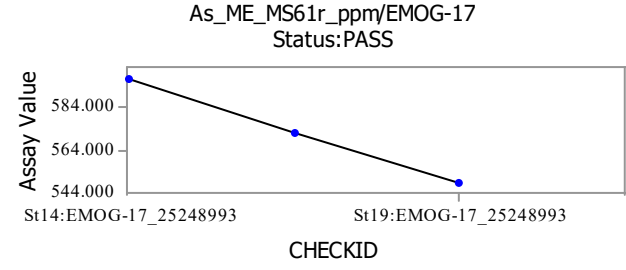
Standard: AMIS0448



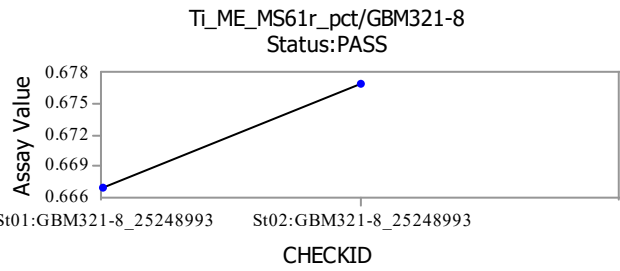
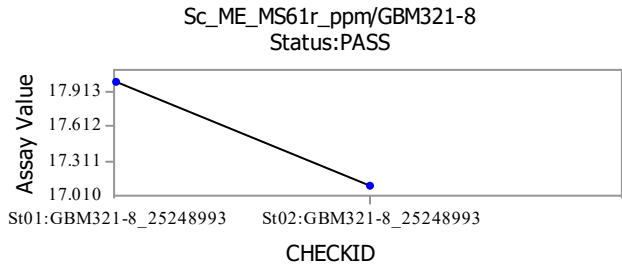
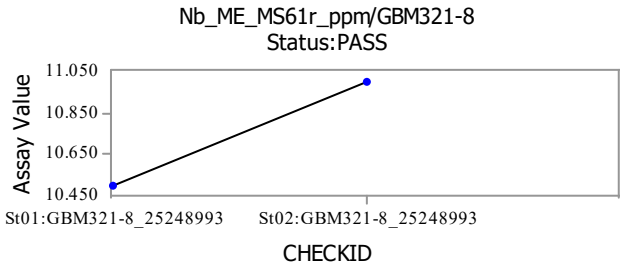
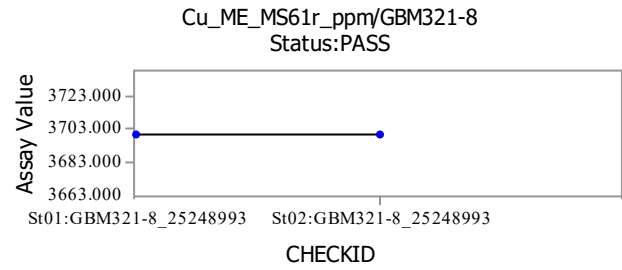
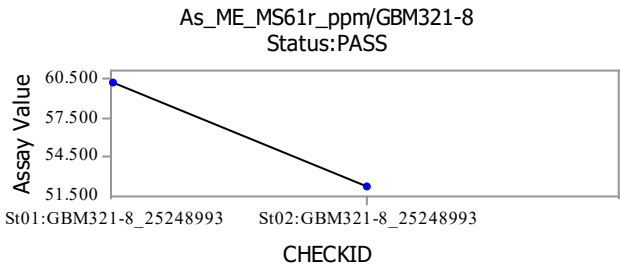
Standard: BEG-24



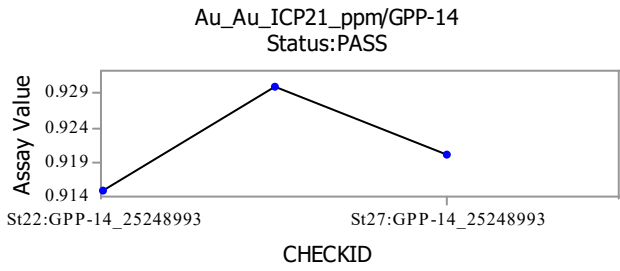
Standard: EMOG-17



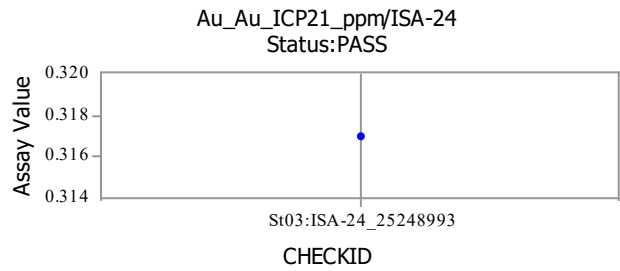
Standard: GBM321-8



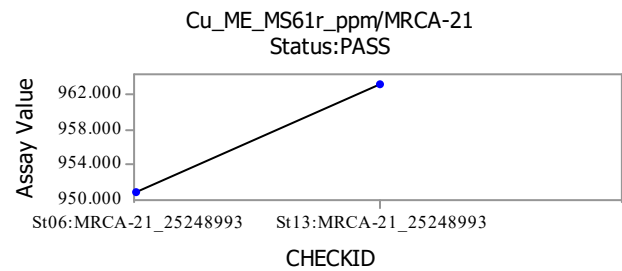
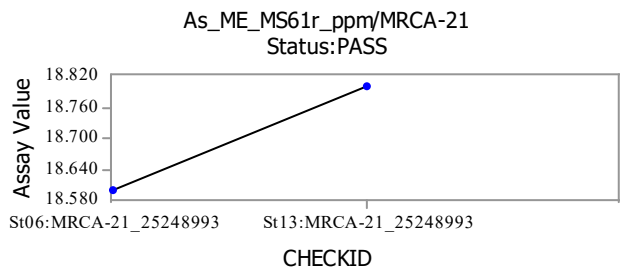
Standard: GPP-14

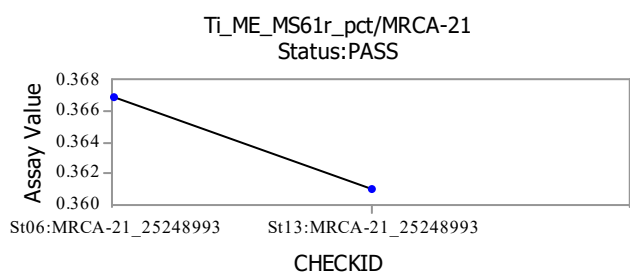
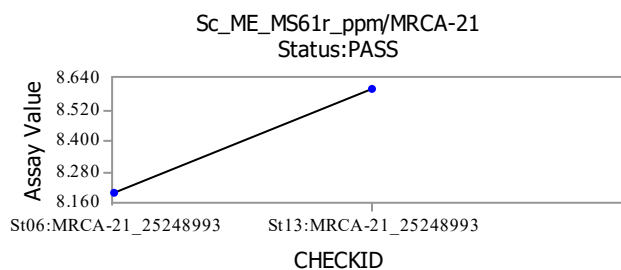
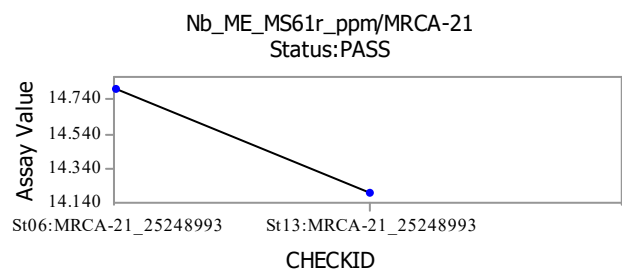


Standard: ISA-24

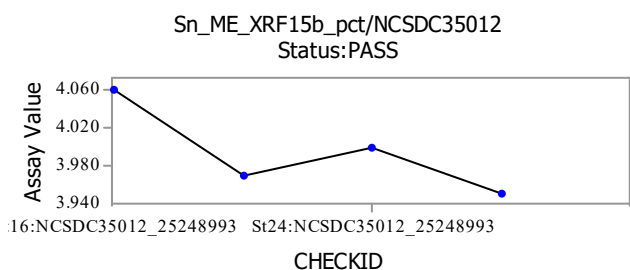


Standard: MRCA-21

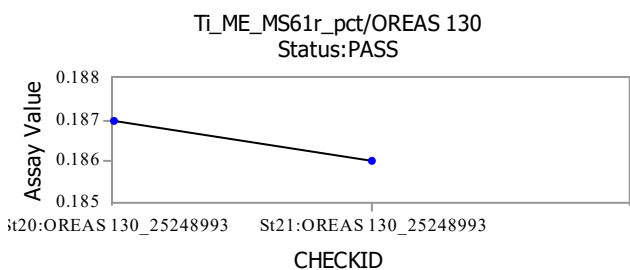
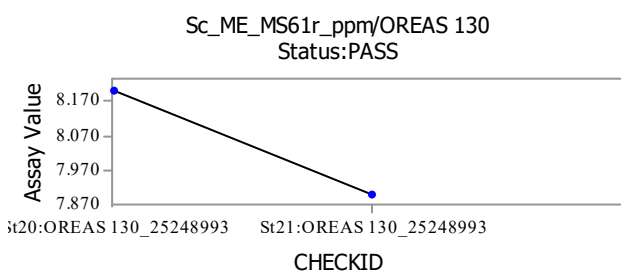
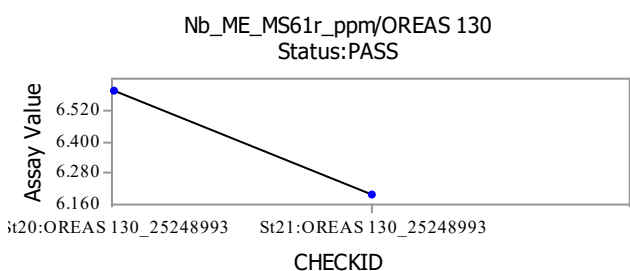
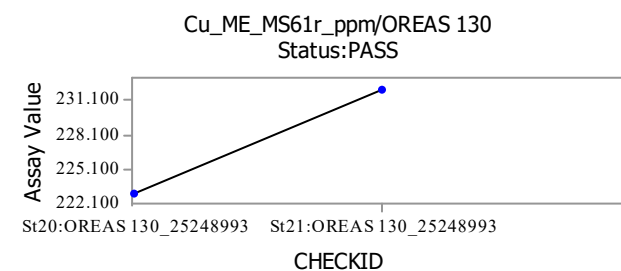
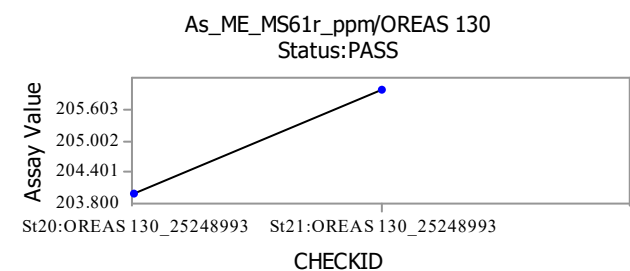




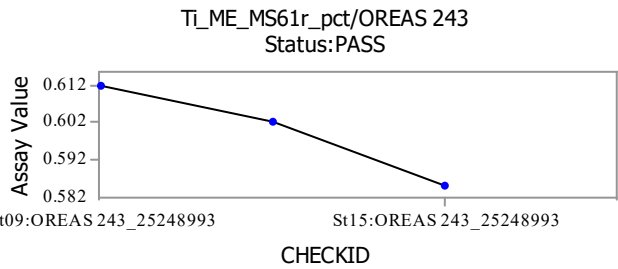
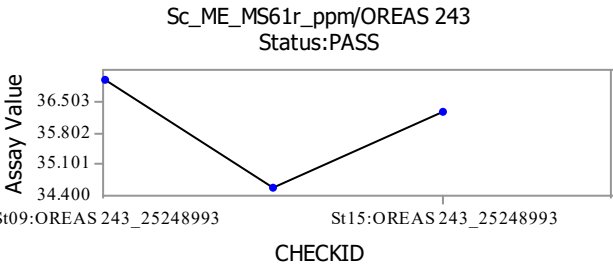
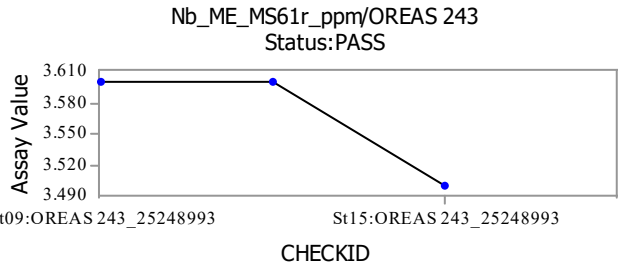
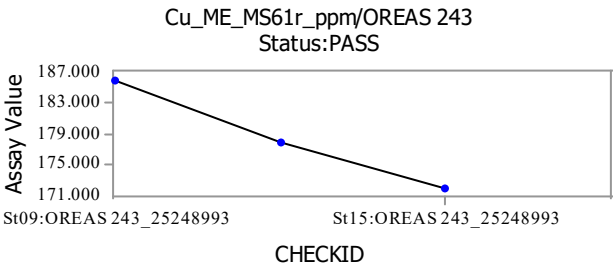
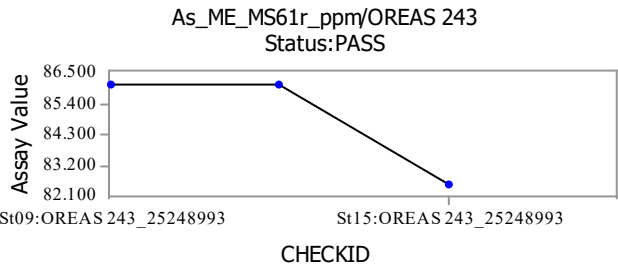
Standard: NCSDC35012



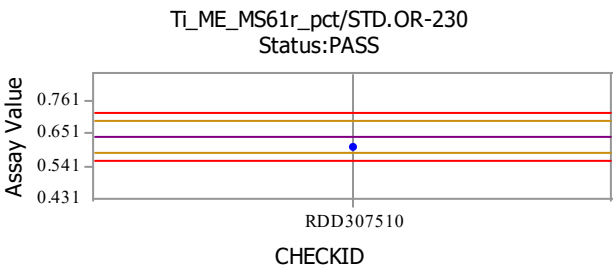
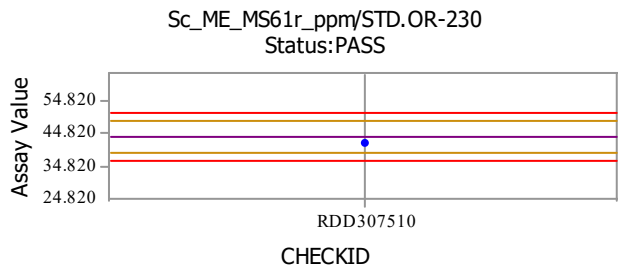
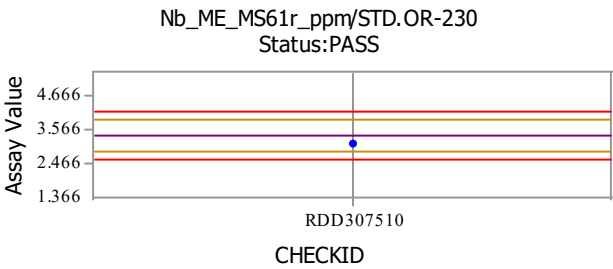
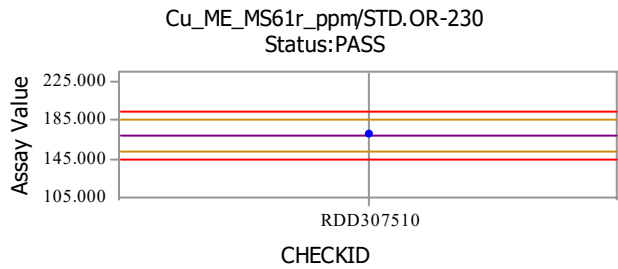
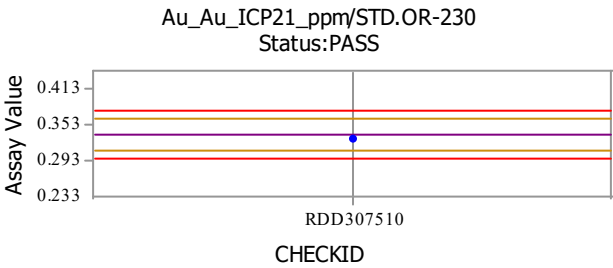
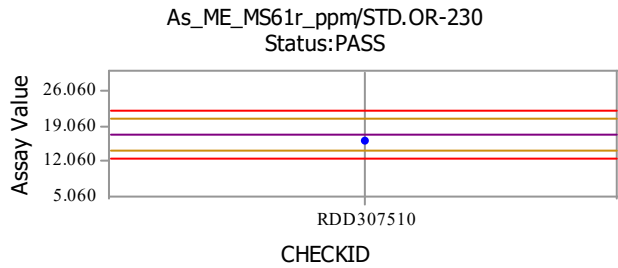
Standard: OREAS 130



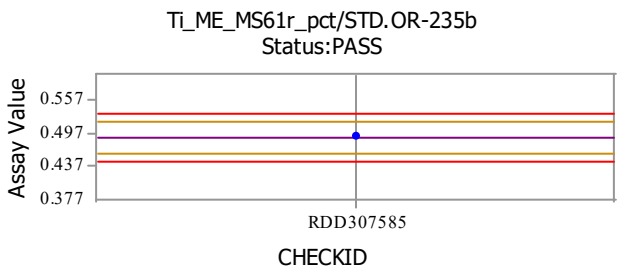
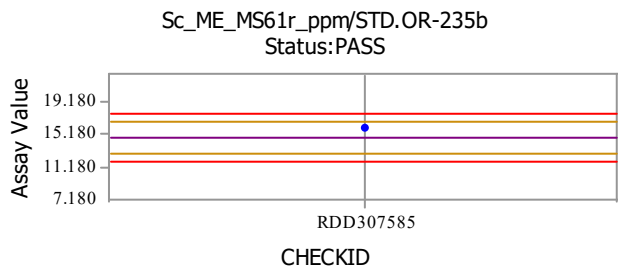
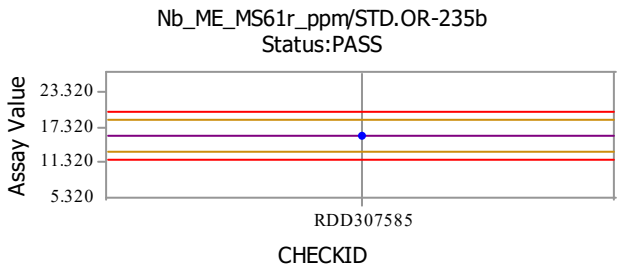
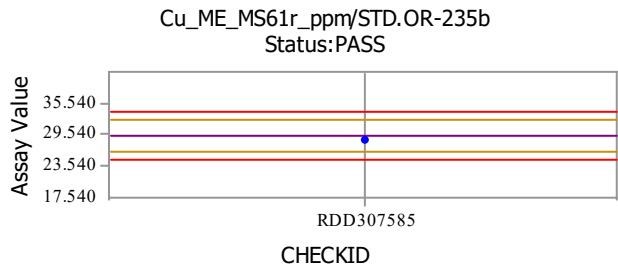
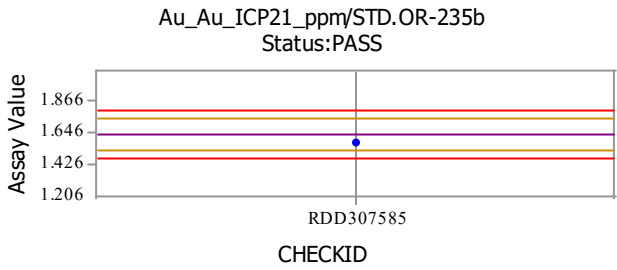
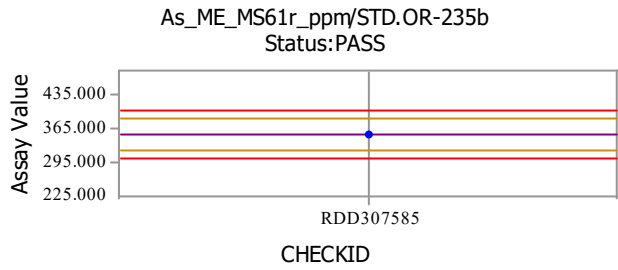
Standard: OREAS 243



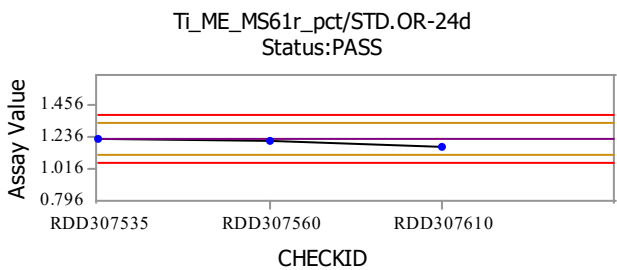
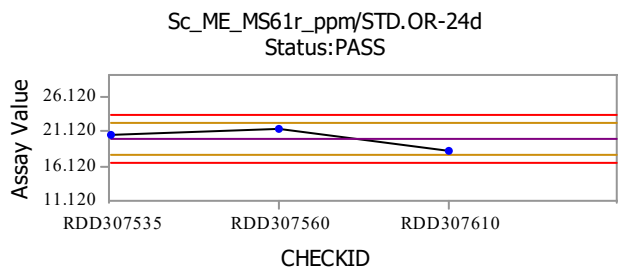
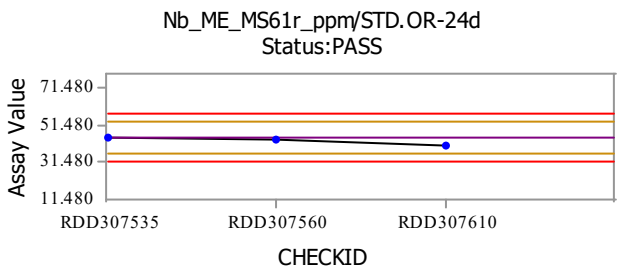
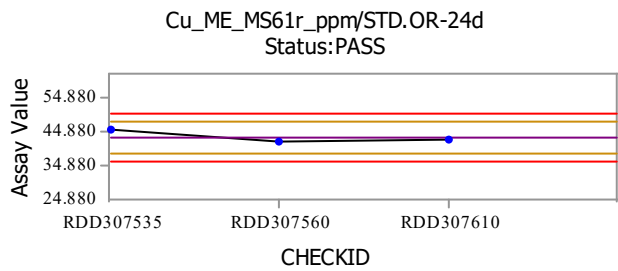
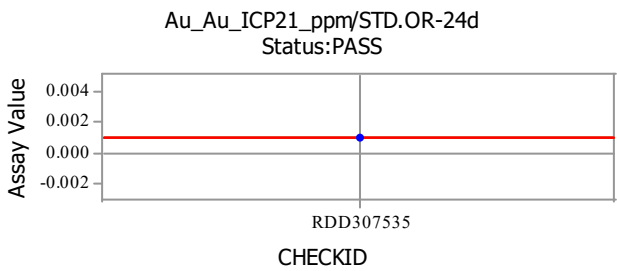
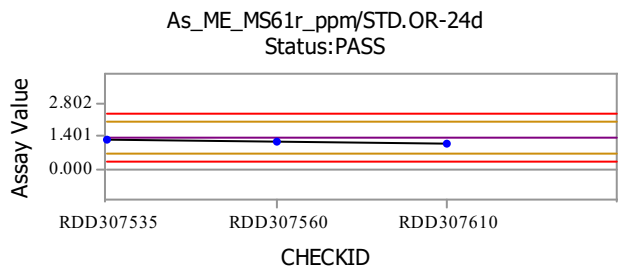
Standard: STD.OR-230



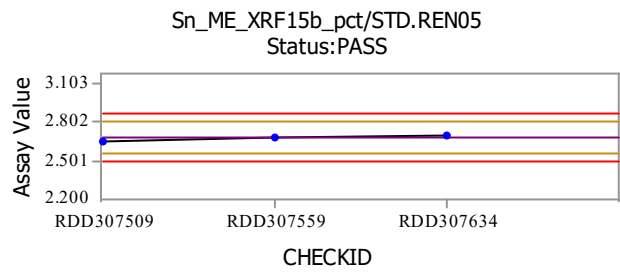
Standard: STD.OR-235b



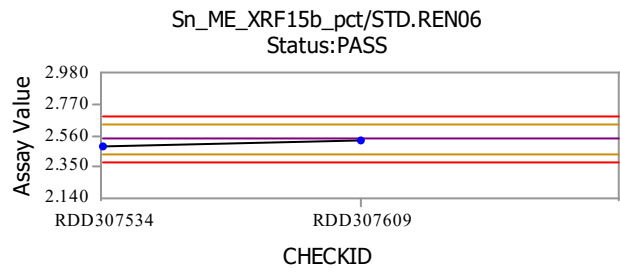
Standard: STD.OR-24d



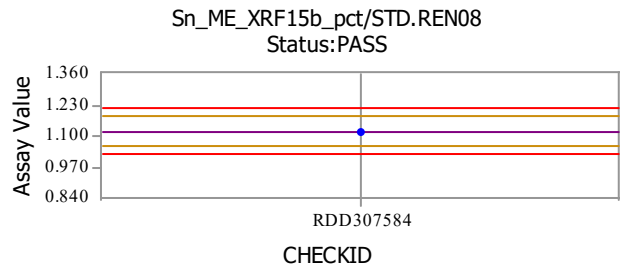
Standard: STD.REN05



Standard: STD.REN06



Standard: STD.REN08

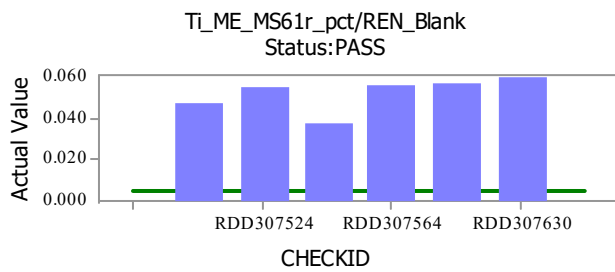
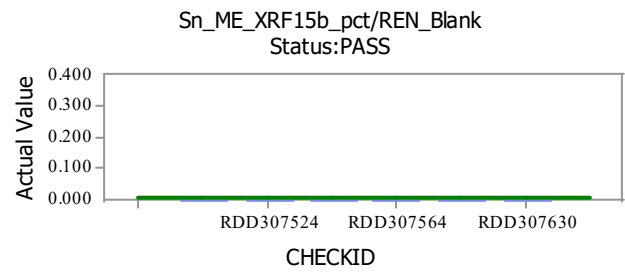
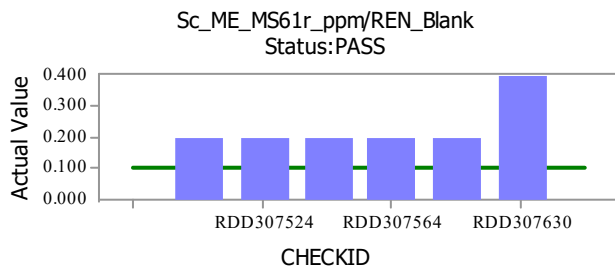
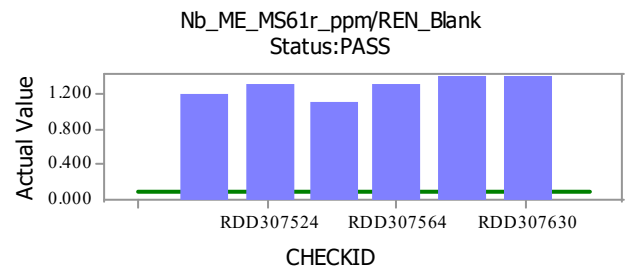
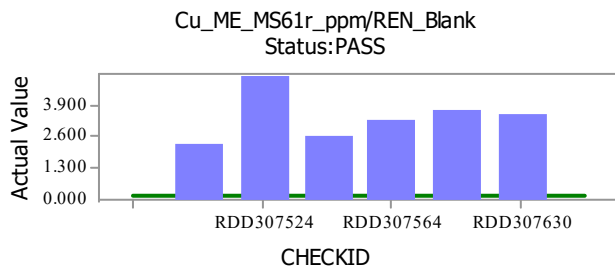
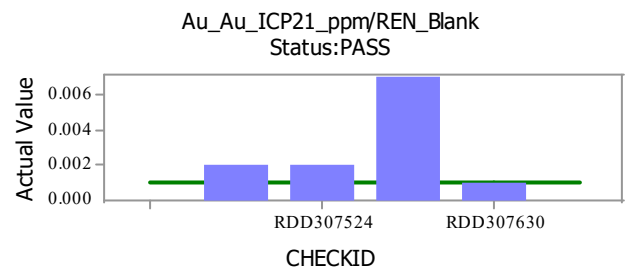
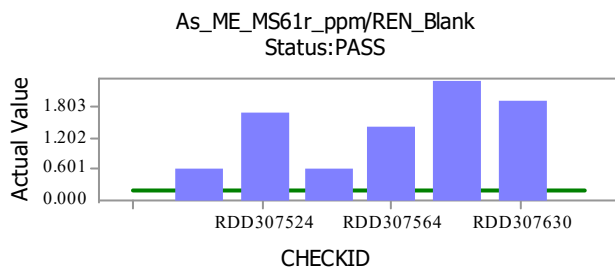


Standards Legend

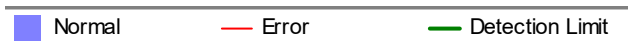
- | | |
|----------------|-------------|
| Expected Value | Warning |
| Error | + Threshold |
| ▲ Error | ▼ Warning |
| ● Normal | |

Blank: ALS_BLANK

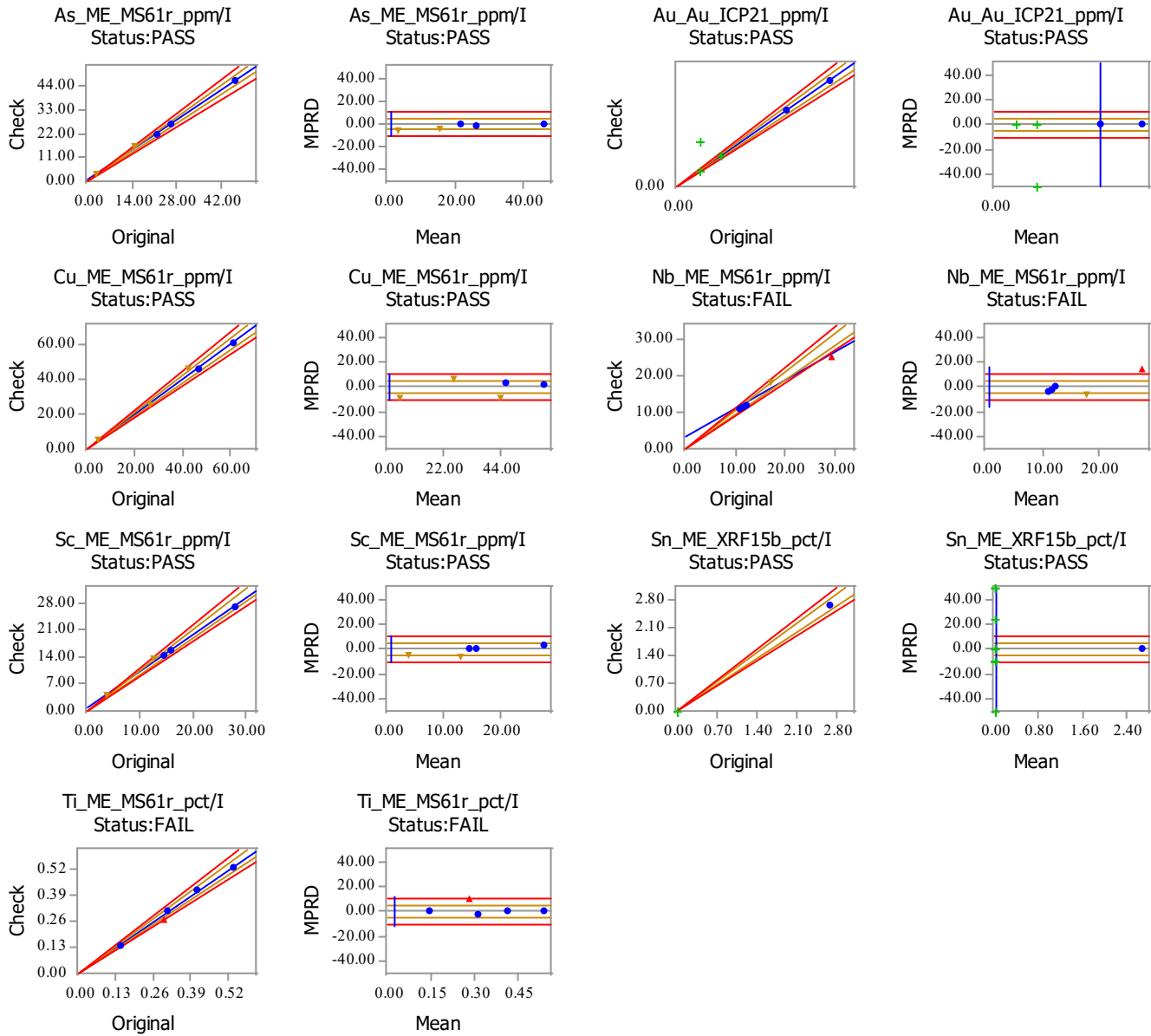
Blank: REN_Blank



Blanks Legend



CheckStage: I



Duplicates Legend

